

Listed below are the specifications for the most commonly used sea containers - courtesy of E. Besler & Company, your full service broker.



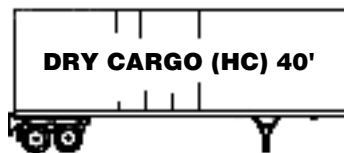
DRY CARGO 20'

EXTERIOR			INTERIOR			DOOR OPENING		CAPACITY
LENGTH	WIDTH	HEIGHT	LENGTH	WIDTH	HEIGHT	WIDTH	HEIGHT	
20'0"	8'0"	8'6"	19'5 1/2"	7'9 1/4"	7'9 1/8"	7'8"	7'6 1/4"	1148 cu ft
6.10 m	2.43 m	2.57 m	5.94 m	2.37 m	2.36 m	2.32 m	2.29 m	32.51 cu m



DRY CARGO 40'

EXTERIOR			INTERIOR			DOOR OPENING		CAPACITY
LENGTH	WIDTH	HEIGHT	LENGTH	WIDTH	HEIGHT	WIDTH	HEIGHT	
40'0"	8'0"	8'6 1/2"	39'7"	7'8 1/2"	7'10 7/16"	7'6"	7'6 1/2"	2383 cu ft
12.19 m	2.43 m	2.59 m	12.06 m	2.34 m	2.39 m	2.27 m	2.31 m	67.48 cu m



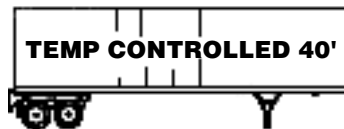
DRY CARGO HIGH CUBE 40'

EXTERIOR			INTERIOR			DOOR OPENING		CAPACITY
LENGTH	WIDTH	HEIGHT	LENGTH	WIDTH	HEIGHT	WIDTH	HEIGHT	
40'0"	8'0"	9'6 1/2"	39'7"	7'8 1/2"	8'10 3/8"	7'6"	8'6 3/8"	2687 cu ft
12.19 m	2.43 m	2.89 m	12.06 m	2.34 m	2.69 m	2.27 m	2.59 m	76.09 cu m



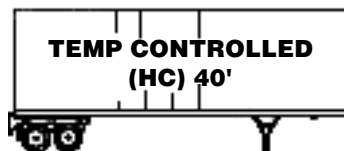
DRY CARGO HIGH CUBE 45'

EXTERIOR			INTERIOR			DOOR OPENING		CAPACITY
LENGTH	WIDTH	HEIGHT	LENGTH	WIDTH	HEIGHT	WIDTH	HEIGHT	
45'0"	8'0"	9'6"	44'6 3/16"	7'8 7/16"	8'9 3/4"	7'8 1/4"	8'5 3/4"	3023 cu ft
13.71 m	2.43 m	2.89 m	13.58 m	2.34 m	2.68 m	2.34 m	2.58 m	85.6 cu m



TEMPERATURE CONTROLLED 40'

EXTERIOR			INTERIOR			DOOR OPENING		CAPACITY
LENGTH	WIDTH	HEIGHT	LENGTH	WIDTH	HEIGHT	WIDTH	HEIGHT	
40'0"	8'0"	8'6 1/2"	37'2"	7'6"	7'2 1/4"	7'6"	6'11 5/8"	2006 cu ft
12.19 m	2.44 m	2.60 m	11.33 m	2.28 m	2.19 m	2.28 m	2.12 m	56.81 cu m



TEMPERATURE CONTROLLED HIGH CUBE 40'

EXTERIOR			INTERIOR			DOOR OPENING		CAPACITY
LENGTH	WIDTH	HEIGHT	LENGTH	WIDTH	HEIGHT	WIDTH	HEIGHT	
40'0"	8'0"	9'6"	39'9 5/8"	7'6"	8'3 1/8"	7'6"	8'7"	2300 cu ft
12.19 m	2.43 m	2.87 m	11.44 m	2.27 m	2.50 m	2.27 m	2.60 m	65.13 cu m



OPEN TOP 40' CONTAINER

Permits the loading of bulky or heavier shipments by overhead crane as well as through rear door. Fabric cover provides in-transit protection.

EXTERIOR			INTERIOR			DOOR OPENING		CAPACITY
LENGTH	WIDTH	HEIGHT	LENGTH	WIDTH	HEIGHT	WIDTH	HEIGHT	
40'0"	8'0"	8'6 1/2"	40'0"	7'8 1/4"	7'5 1/4"	7'6"	7'7 1/8"	2262 cu ft
12.19 m	2.43 m	2.80 m	12.06 m	2.34 m	2.26 m	2.28 m	2.31 m	64.0 cu m



FLAT BED 40' CONTAINER

The perfect unit for transportation of building materials such as plywood, wallboard and insulating panels. Comes complete with cargo holdowns.

EXTERIOR			INTERIOR			DOOR OPENING		CAPACITY
LENGTH	WIDTH	HEIGHT	LENGTH	WIDTH	HEIGHT	WIDTH	HEIGHT	
40'0"	8'0"	8'6"	39'7 5/8"	7'8"	6'11 5/8"	7'1 3/4"	6'2 3/4"	2118 cu ft
12.19 m	2.43 m	2.59 m	12.08 m	2.33 m	2.12 m	2.17 m	1.89 m	60.0 cu m



CHASSIS

Most steamship lines maintain a fleet of chassis at several locations; thus affording their containers a set of "ready wheels."

E. Besler & Co.
115 Martin Lane • Elk Grove Village, IL 60007
Phone (847) 364-0300 • Fax (847) 364-0301

CONTAINER UTILIZATION and METRIC CONVERSION INFORMATION

To Determine Cubic Measurement:

Length x width x height (in inches) = cargo cube
(cu in.)

Cargo cube (cu in.) divided by 1728 = cubic feet

Cubic feet x # of cartons (if all the same size)

= total cubic feet

Total cubic feet x .028317 = total cubic meters

One cubic meter = 35.31 cubic feet

Total weight (lbs) x .45359 = kilos

(to get kilo tons, move the decimal point 3
places to the left)

One kilogram = 2.204 lbs

One metric ton = 2204.6 lbs

Note: For rating purposes, the cubic
measurement is carried out to
the third decimal point.

Container Utilization:

D20 max capacity = 31 to 33.5 cu m

std loadability 85 pct = 25.35m³ to 28.35 m³

(D20 maximum capacity will depend on leased
container series)

D40 (8'6) max capacity = 68 cu m

std loadability 85 pct = 57.8 cu m

D40HC (9'6) max capacity = 76.5 cu m

std loadability 85 pct = 64.6 cu m

D45 (9'6) max capacity = 85.6 cu m

std loadability 85 pct = 73 cu m

Open top 40 max capacity = 64 cu m

std loadability 85 pct = 54.4 cu m

R40 (HC) max capacity = 66.41 cu m

std loadability 85 pct = 56.5 cu m

**For All Your Container Needs
Contact Our Import Or Export Logistics Departments at:**

Phone (847) 364-0300

Fax (847) 364-0301

